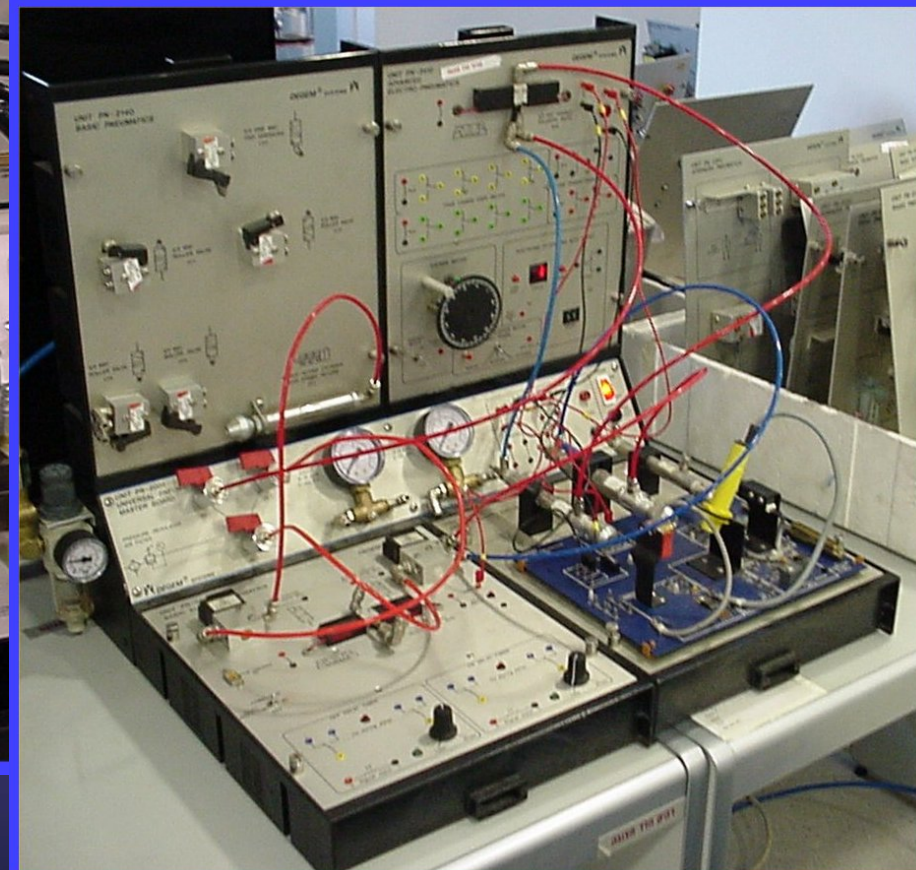
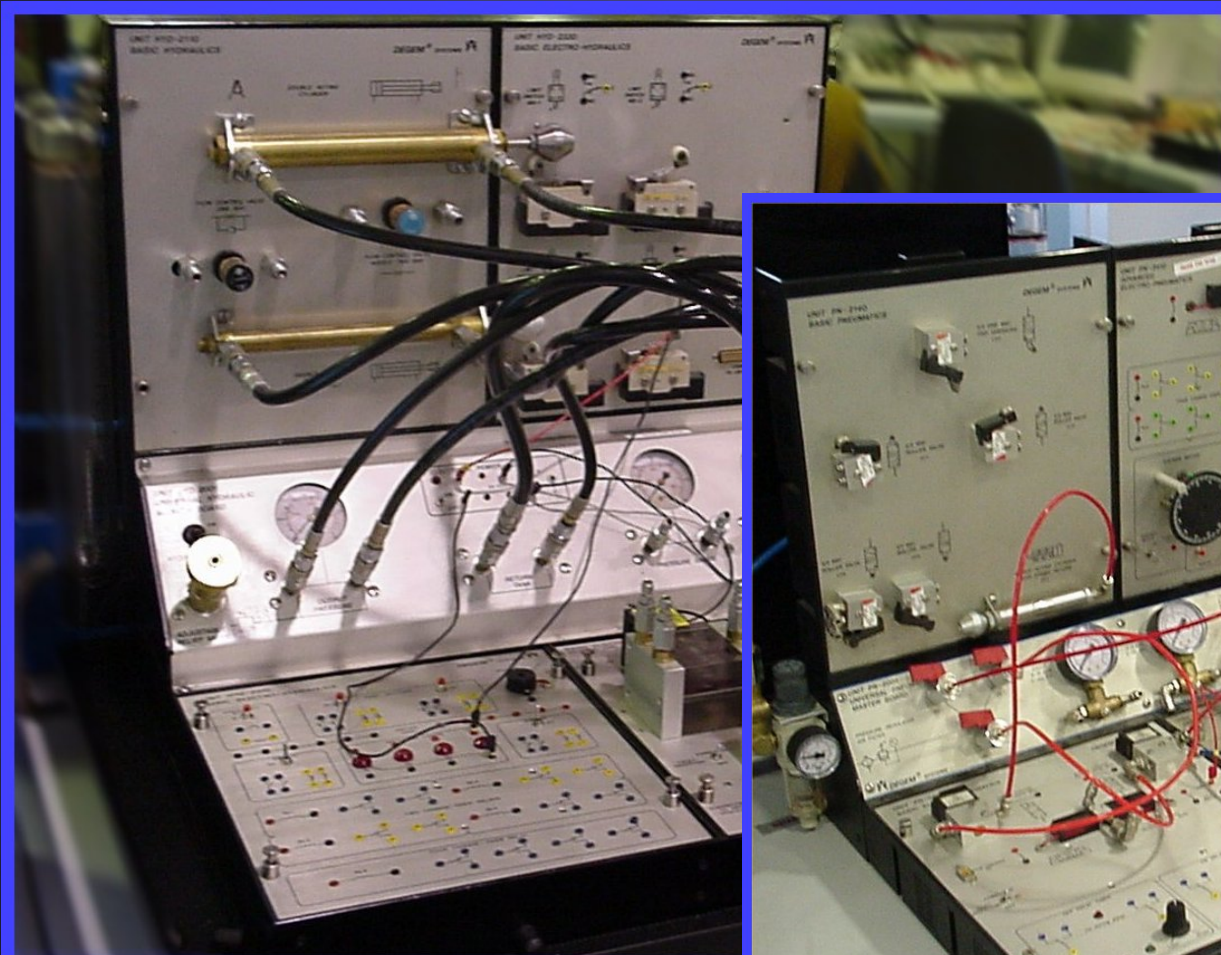


Pneumatic and Hydraulic Laboratories

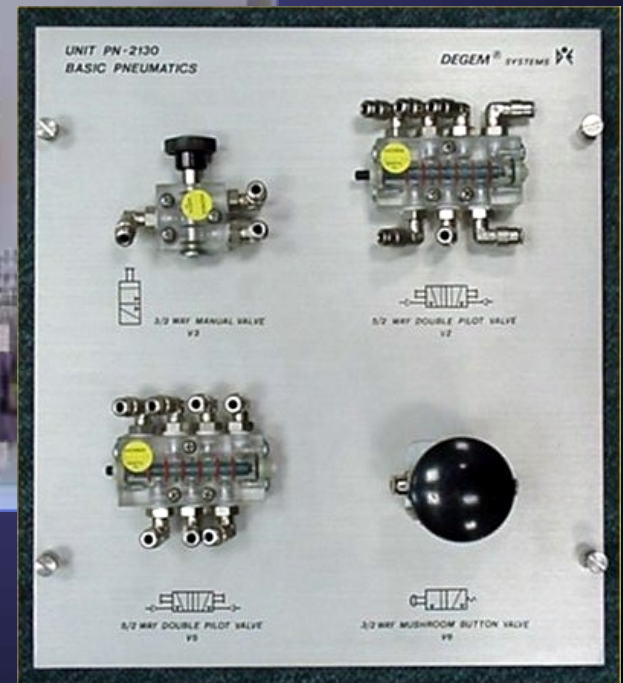


Subjects covered

- Hydraulic or pneumatic basic principles
- Hydraulic or pneumatic advances components
- Electro-Hydraulic or Electro-pneumatic basic principles
- Electro-Hydraulic or Electro-pneumatic advanced components
- Proportional valves application
- PLC application

Hardware, software and manuals

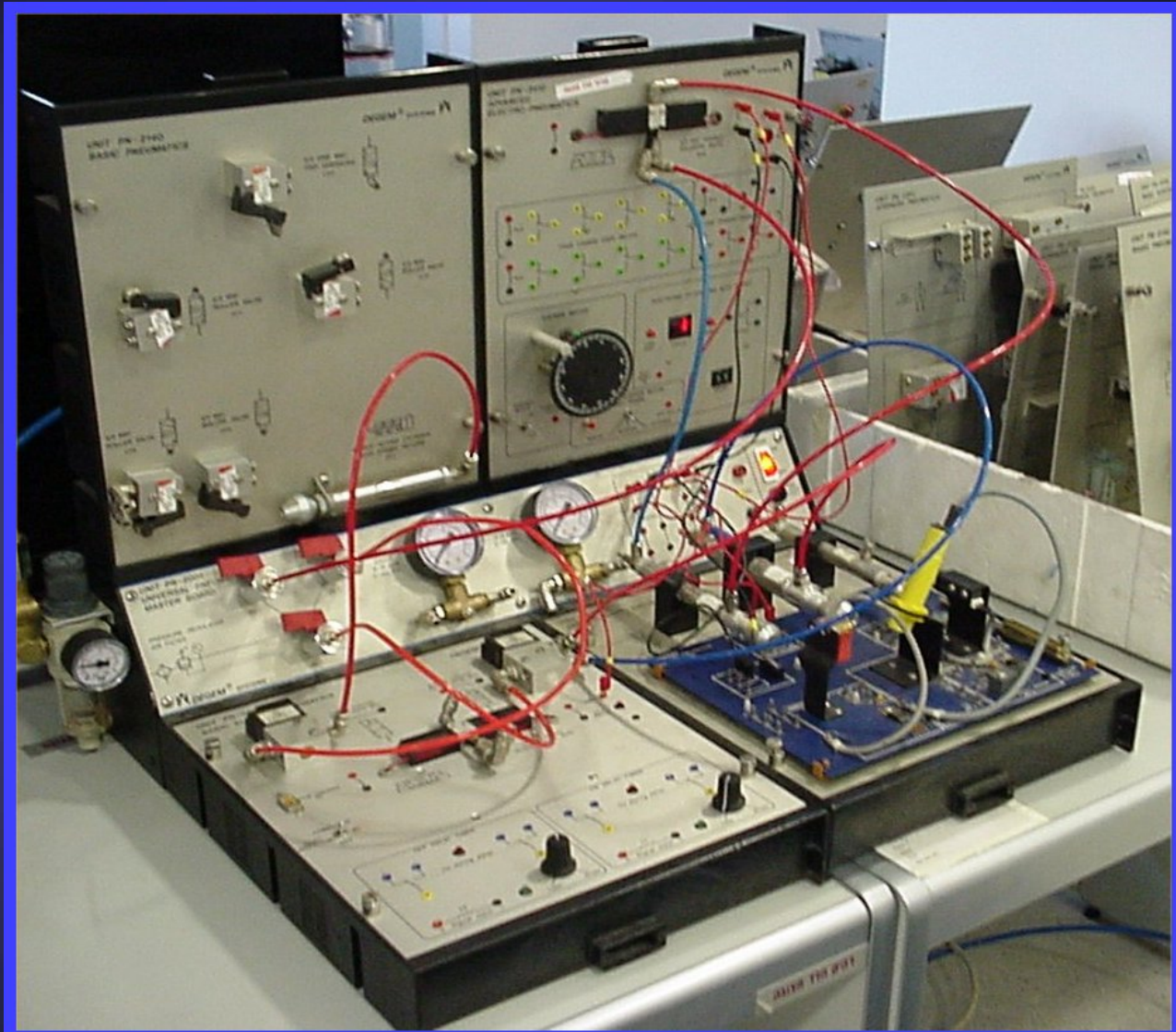
- Real components boards
- Full courseware with simulation application
- Student manual
- Instructor manual



Hydraulic laboratory



Pneumatic laboratory



Courseware

PN2100



Select a lesson

1. 3/2-Way, Manually-Operated Valve
2. Operation of a Single Acting Cylinder
3. Double-Acting Cylinder
4. 5/2-Way Double Pilot Valve
5. Operation of a Control Circuit
6. Flow Control Operation
7. Speed Regulation Method
8. Regulation of a Double-Action
9. Semi-Automatic Pneumatic C
10. Automatic Control Circuit
11. A Grinding Machine

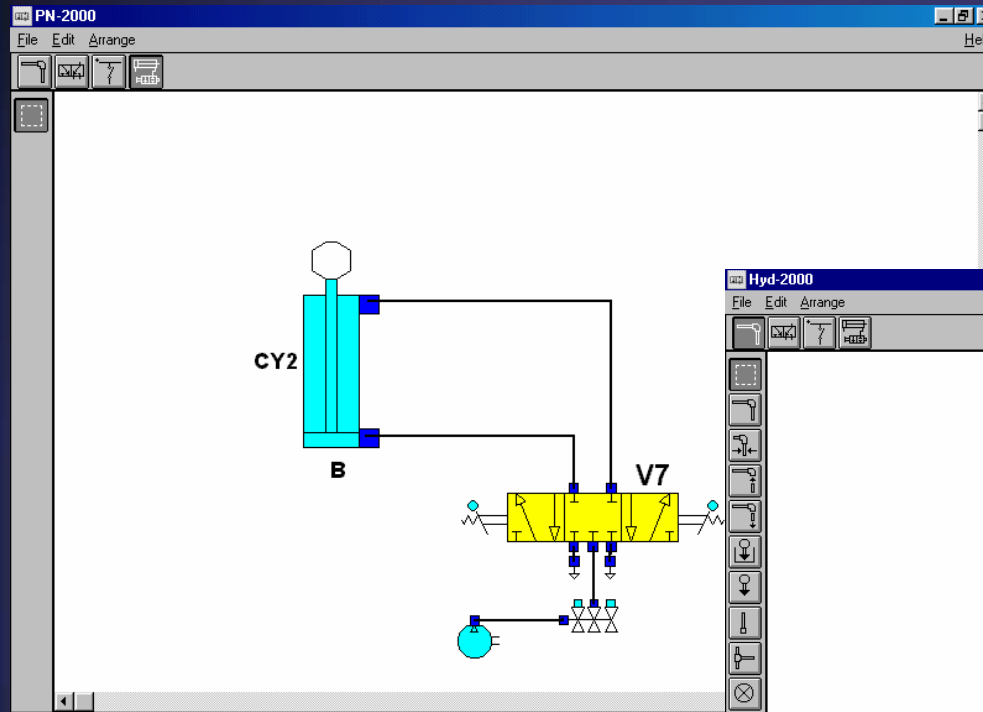
Basic ElectroHydraulics



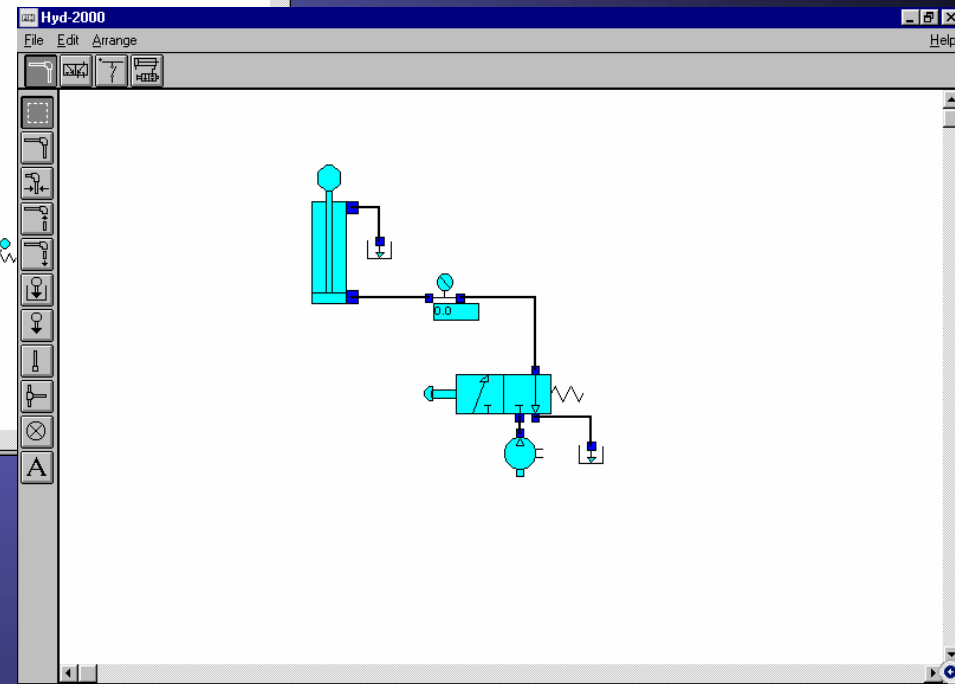
Select a lesson

1. The Power Unit and the Master Board
2. Installation and Maintenance
3. Series Connections
4. Series and Parallel Connections
5. The Relay as a Contact Multiplier
6. The Relay As A Contact Breaker
7. The Relay As A Contact Inverter
8. Use Of A Relay In A Control Circuit
9. Using a Relay as a Memory Unit
10. Activating a Double-Acting Cylinder
11. The Relay as a Memory Unit

Simulation



Pneumatic



Hydraulic

The end

Thank you for your attention